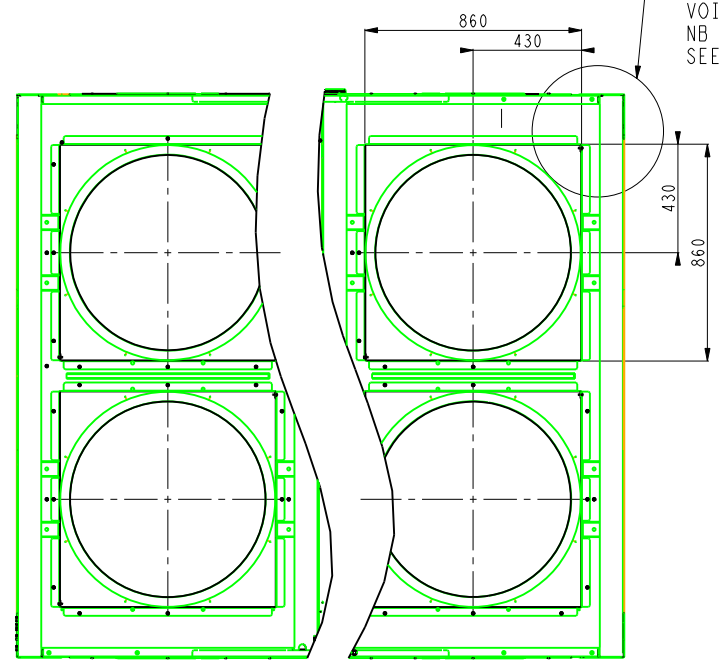
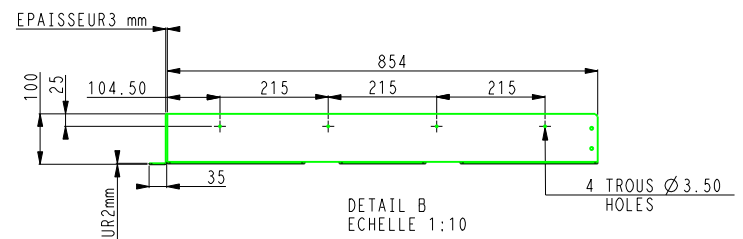
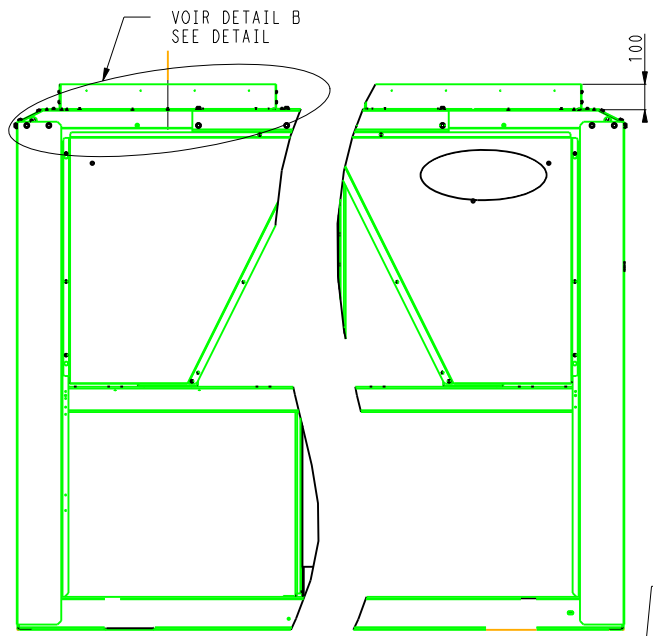
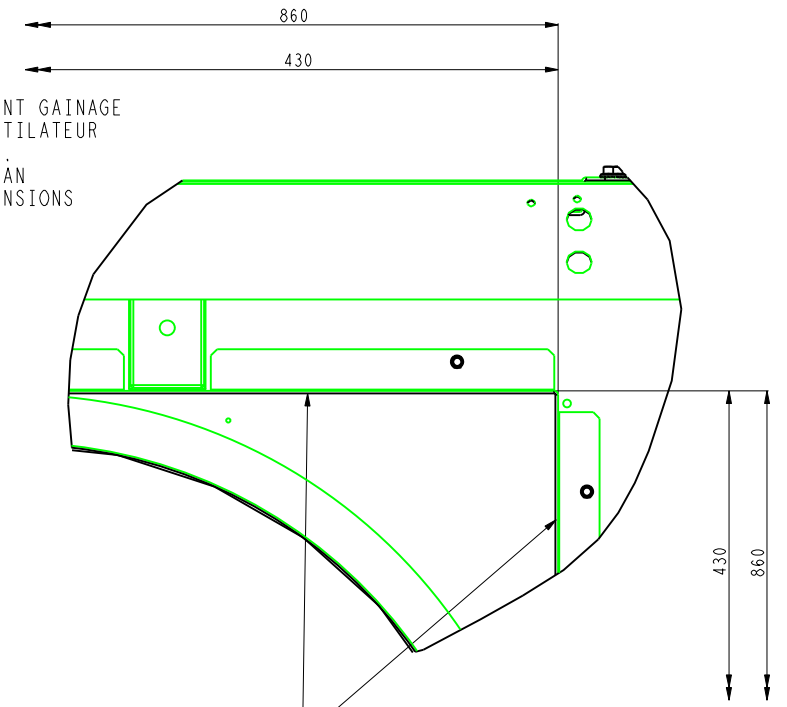


	30XA 602	30XA 702	30XA 752	30XA 802
A	356	372	372	325
B	272	242	242	284
C	438	438	438	438
D	2852	2852	2852	2838
Ø E	141,3	168,3	168,3	168,3
Ø F	141,3	168,3	168,3	168,3

OPTION 10



VOIR DETAIL A
 NB : EQUERRES DE RACCORDEMENT GAINAGE VENTILATION POUR CHAQUE VENTILATEUR
 VOIR COTES SUR DETAIL A ET B.
 NB : ANGLE PLATES FOR EACH FAN
 SEE DETAILS A AND B FOR DIMENSIONS



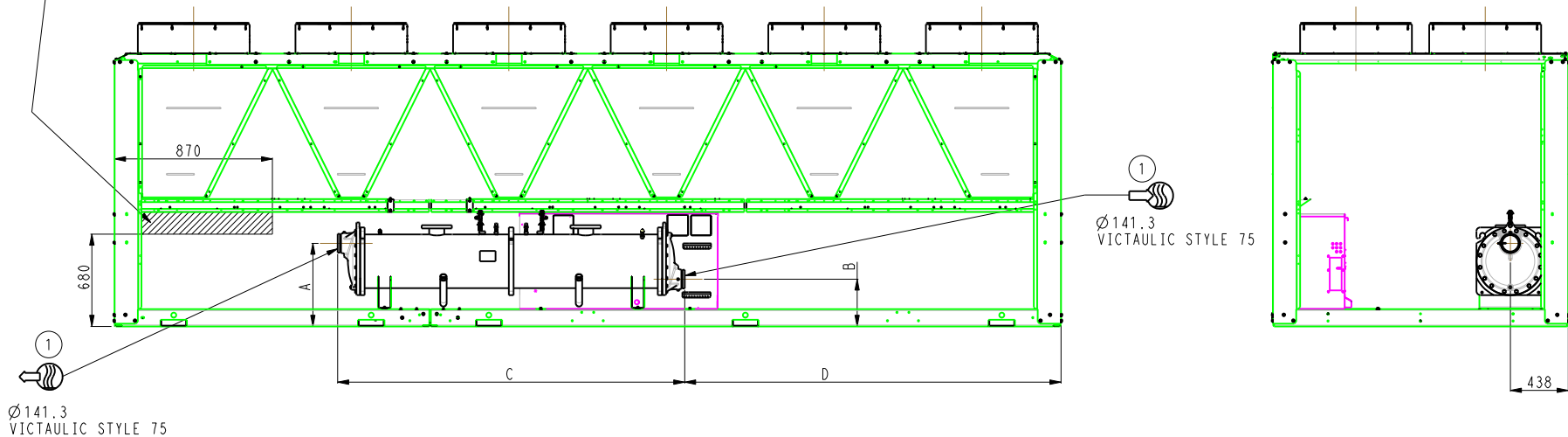
EQUERRES RACCORDEMENT GAINE DE VENTILATION
 ANGLE PLATES FOR VENTILATION DUCT HIDING

DETAIL A
 ECHELLE 1:4

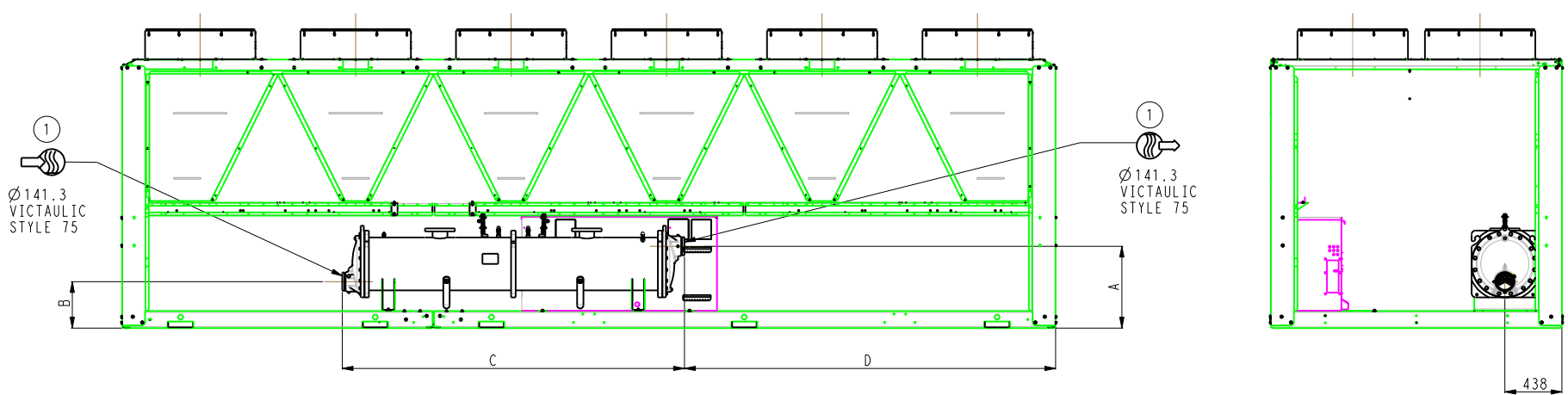
TOLERANCE	30XA 602-702-752-802		DATE	Feuille
±10	*		02-04-2012	Sheet
			00DCG000009200	2/7
				Indice
				H

THE OUTLET CONNECTING PIPE CAN'T BE STRAIGHT, DUE TO OTHER PARTS' PROXIMITY IN THIS AREA

OPTION 100A OR OPTION 5 OR OPTION 6



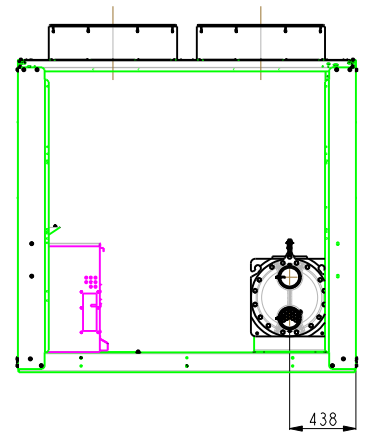
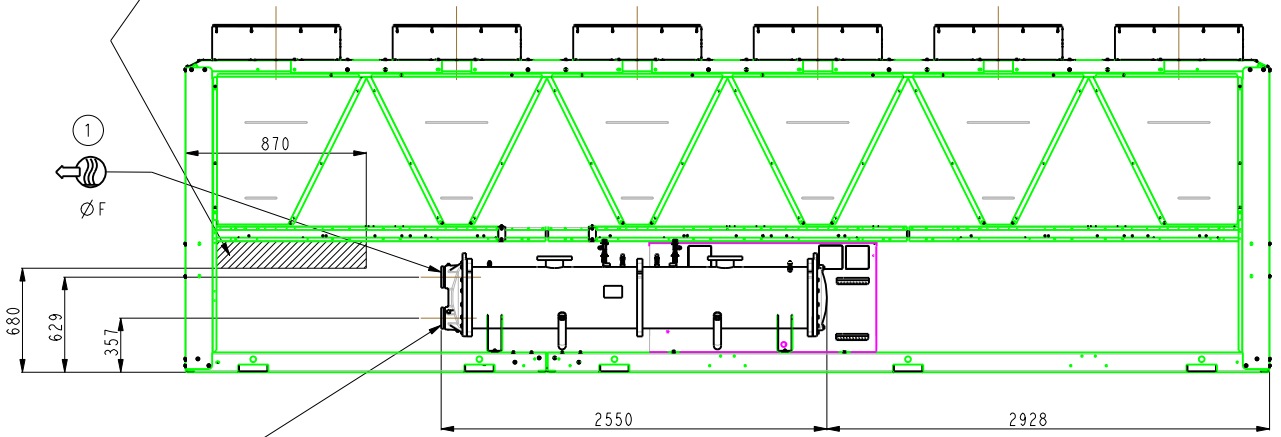
OPTION 100A + 107 OR OPTION 5 + 107 OR OPTION 6 + 107



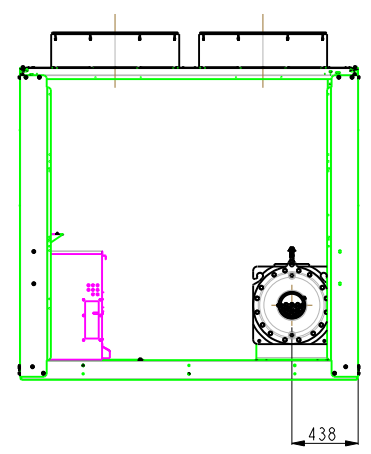
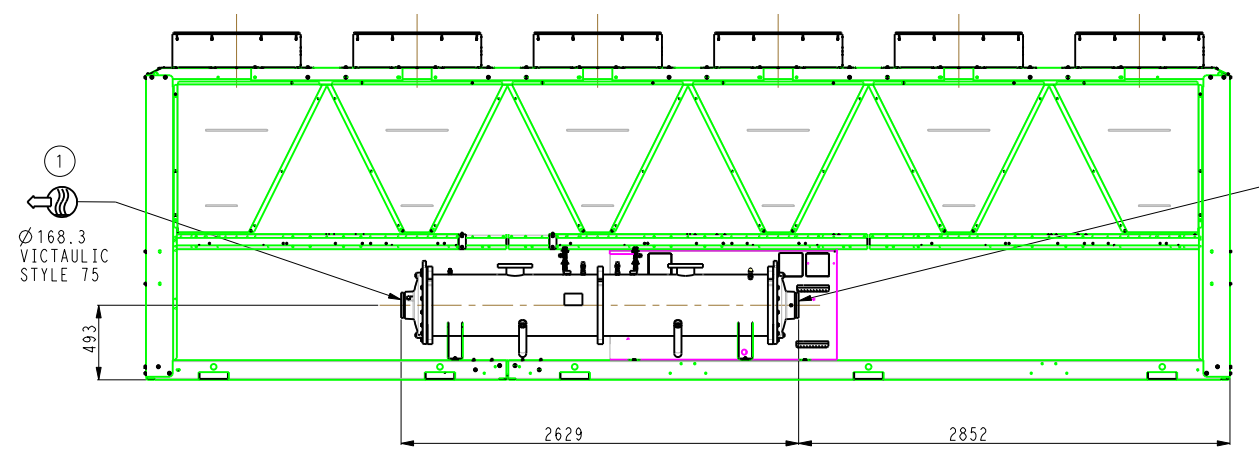
	30XA 602	30XA 702	30XA 752	30XA 802
A	629	629	629	609
B	357	357	357	325
C	2628	2628	2628	2767
D	2850	2850	2850	2780


 THE OUTLET CONNECTING PIPE CAN'T BE STRAIGHT, DUE TO OTHER PARTS' PROXIMITY IN THIS AREA

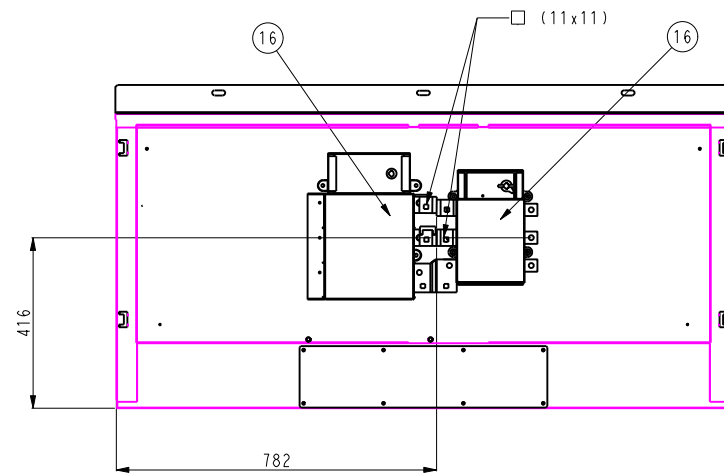
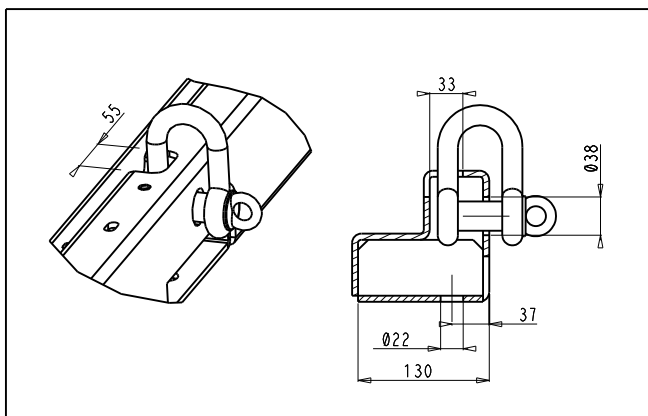
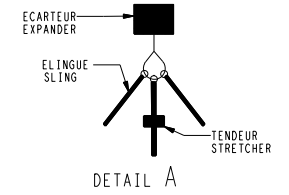
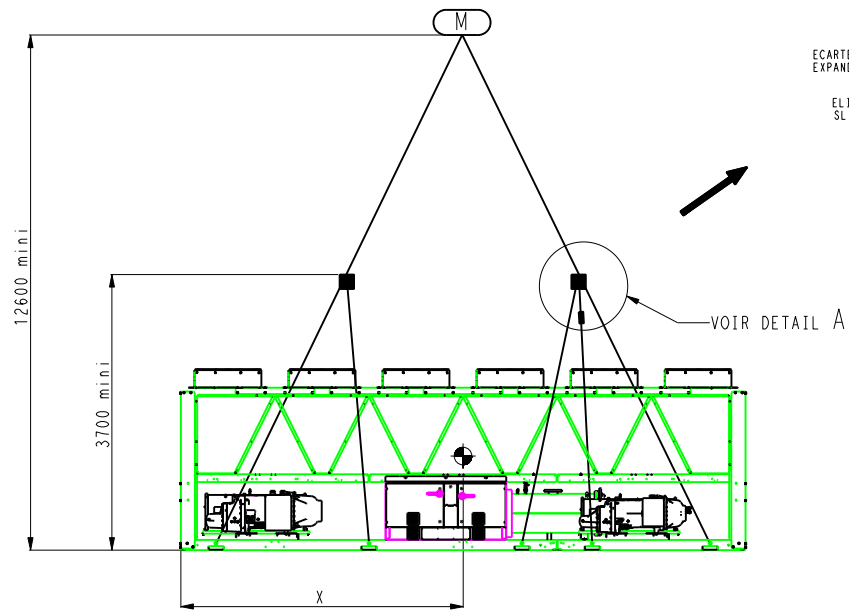
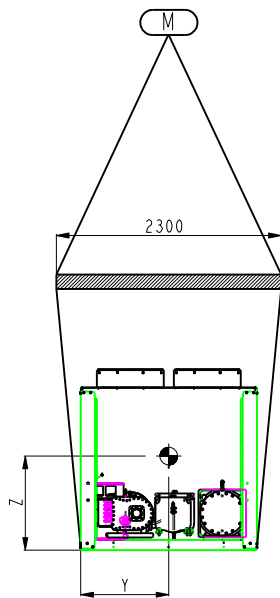
OPTION 107



OPTION 100C




TOLERANCE ±10	30XA 602-702-752-802		DATE	Feuille Sheet 4/77
	*		02-04-2012	
00DCG000009200			Indice	H



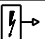




ELECTRICAL BOX: POWER CONNECTION

A400

TOLERANCE	30XA 602-702-752-802		DATE	Feuille
±10	*		02-04-2012	Sheet
			00DCG000009200	Indice
				H

TAILLE SIZE	OPTIONS	PT (Kg)	P1 (Kg)	P2 (Kg)	P3 (Kg)	P4 (Kg)	P5 (Kg)	P6 (Kg)	P7 (Kg)	P8 (Kg)	P9 (Kg)	P10 (Kg)	X (mm)	Y (mm)	Z (mm)
30XA 602	OPT 279	6097	656	565	655	564	655	564	655	564	655	563	3576	953	781
30XA 702	OPT 279	6247	668	579	668	580	669	581	670	581	671	582	3596	963	787
30XA 752	OPT 279	6547	743	614	729	601	713	589	706	583	695	574	3366	909	738
30XA 802	OPT 279	6847	765	650	751	638	736	626	731	620	720	611	3392	939	731
30XA 602	OPT 23 + OPT 279	6207	668	575	667	574	667	579	667	574	666	573	3576	953	781
30XA 702	OPT 23 + OPT 279	6367	681	590	681	591	682	592	682	592	683	593	3596	963	787
30XA 752	OPT 23 + OPT 279	6657	756	624	741	611	725	599	718	593	706	583	3366	909	738
30XA 802	OPT 23 + OPT 279	6957	777	660	763	641	748	636	742	630	731	621	3392	939	731
30XA 602	STD UNIT	5707	614	529	614	528	614	528	614	528	613	527	3576	953	781
30XA 702	STD UNIT	5857	626	543	626	544	627	545	628	545	629	546	3596	963	787
30XA 752	STD UNIT	6157	699	577	685	565	671	554	664	549	653	540	3366	909	738
30XA 802	STD UNIT	6457	721	613	708	601	695	590	689	585	679	577	3392	939	731
30XA 602	OPT 254 OR 255 + OPT 279	6870	740	637	739	635	739	635	739	635	737	634	3576	953	781
30XA 702	OPT 254 OR 255 + OPT 279	7030	751	651	751	653	752	654	753	654	755	655	3596	963	787
30XA 602	OPT 23	5817	626	539	626	538	626	543	626	538	624	537	3576	953	781
30XA 702	OPT 23	5977	639	554	639	555	640	556	640	556	641	557	3596	963	787
30XA 752	OPT 23	6267	712	587	697	575	683	564	676	559	664	549	3366	909	738
30XA 802	OPT 23	6567	733	623	720	604	707	600	700	595	690	587	3392	939	731
30XA 602	OPT 254 OR 255	6480	698	601	698	599	698	599	698	599	695	598	3576	953	781
30XA 702	OPT 254 OR 255	6640	709	615	709	617	710	618	711	618	713	619	3596	963	787

	ENGLISH	FRANCAIS	GERMAIN	ESPANOL	ITALIANO
①	Cooler water inlet and outlet	Entrée et sortie eau évaporateur	Kaltwasser eintritt und austritt	Entrada y salida agua al evaporador	Entrata e uscita acqua evaporatore
②	Cooler air vent	Purge air évaporateur	Kaltwasser entlüftungsventil	Purgador aire evaporador	Valvola sfogo aria evaporatore
③	Water drain	Purge eau évaporateur	Kaltwasser abfluss	Drenaje agua evaporador	Scarico acqua evaporatore
④	NA	NA	NA	NA	NA
⑤	Safety relief valve LP	Soupape de sécurité BP	Verdampfer sicherheitsventil LP	Valvula de seguridad LP	Valvola di sicurezza LP
⑥	NA	NA	NA	NA	NA
⑦	NA	NA	NA	NA	NA
⑧	NA	NA	NA	NA	NA
⑨	Safety relief valve HP	Soupape de sécurité HP	Verdampfer sicherheitsventil HP	Valvula de seguridad HP	Valvola di sicurezza HP
⑩	NA	NA	NA	NA	NA
⑪	NA	NA	NA	NA	NA
⑫	NA	NA	NA	NA	NA
⑬	Services clearances required	Espace nécessaire à la maintenance	Freiraum für wartung	Espacio necesario para servicio y mantenimiento	Spazio necessario per il servizio
⑭	Space required to remove cooler tubes	Espace nécessaire aun réentubage de l'évaporateur	Freiraum für rohren austauch	Espacio necesario para cambiar tubos de los intercambiadores	Spazio necessario per la rimozione dei tube evap.
⑮	Electrical box	Coffret électrique	Schaltschrang	Caja electrica	Pannello elettrico
⑯	Main disconnect switch	Interrupteur général	Haupttrennschalter	Interruptor de desconexion principal	Sezionatore general
⑰	NA	NA	NA	NA	NA
PT	Total operating weight	Poids total en fonctionnement	Betriebsgewicht	Peso en funcionamiento	Peso in funzionamento
	Inlet water	Entrée eau	Wasser eintritt	Entrada agua	Entrata acqua
	Outlet water	Sortie eau	Wasser austritt	Salida agua	Uscita acqua
	Electrical supply entry	Entrée raccordement électrique	Strom Anschlüsse	Entrada cables electricos	Entrata cavi alimentazione
	Center of gravity	Centre de gravité	Maschinenschwerpunkt	Centro de gravedad	Centro di gravita
	Handling Rigging of the unit: the sizing of the rigging or lifting elements is the responsibility of the installer	Manutention de l'unité Le dimensionnement des éléments de manutention ou de levage sont sous la responsabilité du manutentionnaire	Anheben des geräts Der installateur ist für die dimensionierung der hebeelemente verantwortlich	Sostieniento de la unidad Las dimensiones de los elementos de sostieniento o levantamiento es responsabilidad de instalador	Sollevamento dell'apparechio La responsabilita del dimensionamento degli elementi di sistema di sollevamento e di pertinenza dell'installatore

TOLERANCE

±10

30XA 602-702-752-802

*



DATE

02-04-2012

00DCG000009200

Feuille

Sheet

7/77

Indice

H