

	30XA 1002	30XA 902 OPT 254
A	297	325
B	290	284
C	2589	2570
D	2832	2840
ØE	219.1	168.3

TOLERANCE  
±10

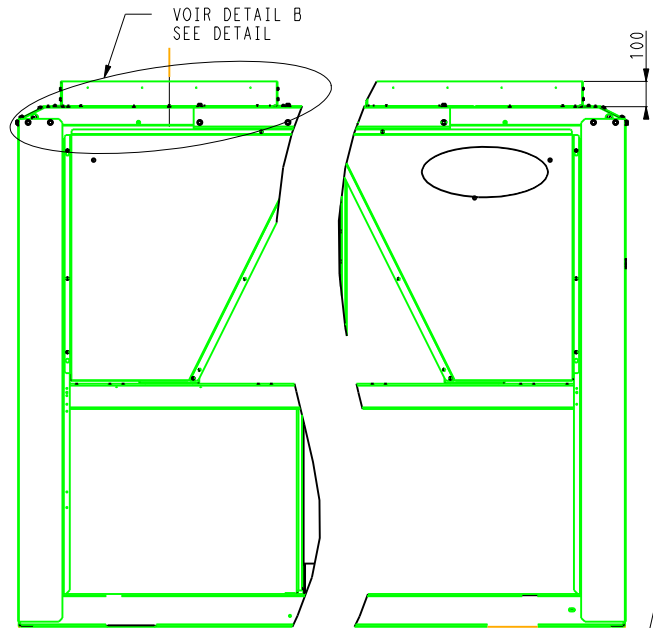
30XA 1002  
30XA 902 OPT 254 OR 255



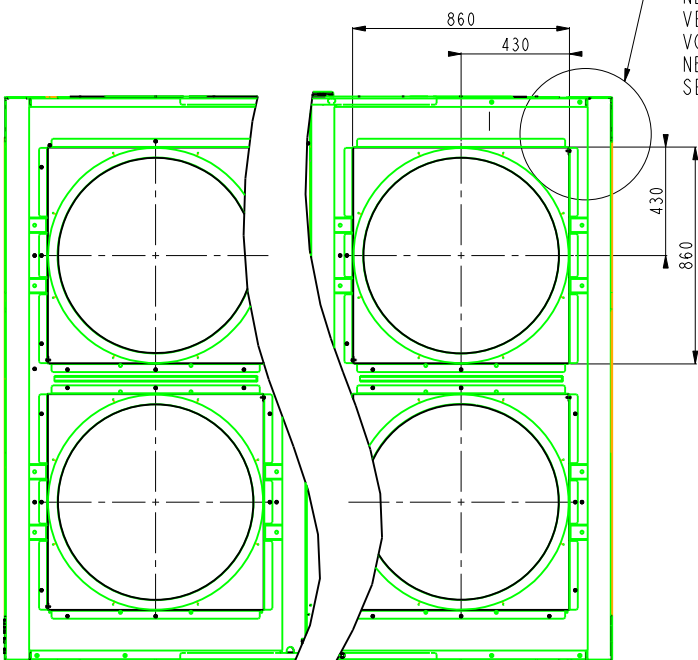
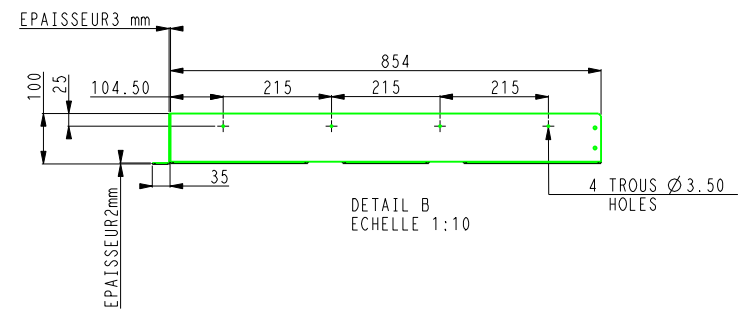
DATE  
02-04-2012

00DCG000009400

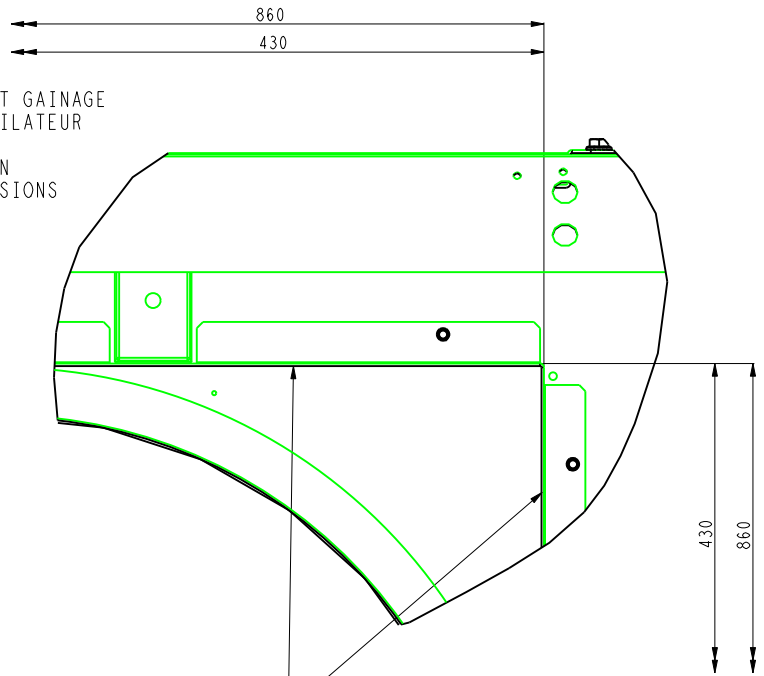
Feuille  
Sheet  
1/27  
Indice  
H



**OPTION 10**



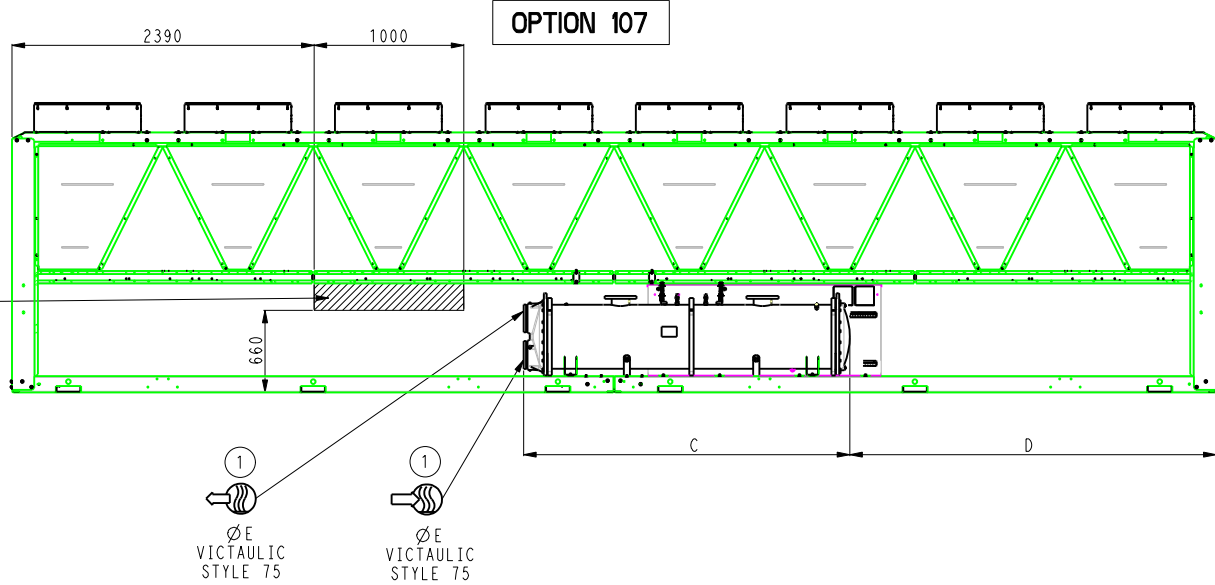
VOIR DETAIL A  
 NB : EQUERRES DE RACCORDEMENT GAINAGE VENTILATION POUR CHAQUE VENTILATEUR  
 VOIR COTES SUR DETAIL A ET B.  
 NB : ANGLE PLATES FOR EACH FAN  
 SEE DETAILS A AND B FOR DIMENSIONS



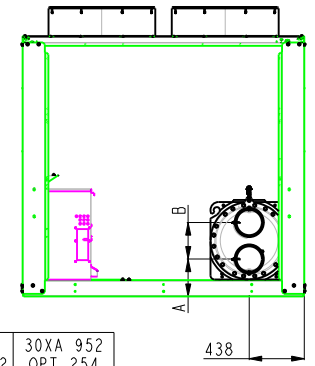
EQUERRES RACCORDEMENT GAINE DE VENTILATION  
 ANGLE PLATES FOR VENTILATION DUCT HIDING  
 DETAIL A  
 ECHELLE 1:4

TOLERANCE ±10	30XA 1002		DATE	Feuille Sheet 2/7 Indice H
	30XA 902 OPT 254 OR 255		02-04-2012	
			00DCG000009400	

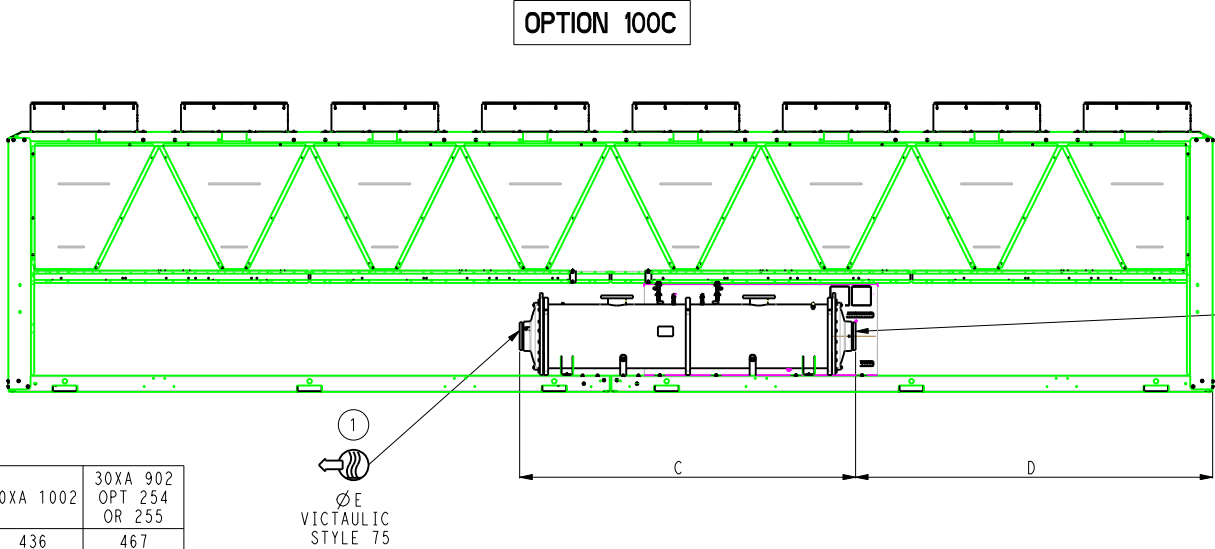
 THE OUTLET CONNECTING PIPE CAN'T BE STRAIGHT, DUE TO OTHER PARTS' PROXIMITY IN THIS AREA



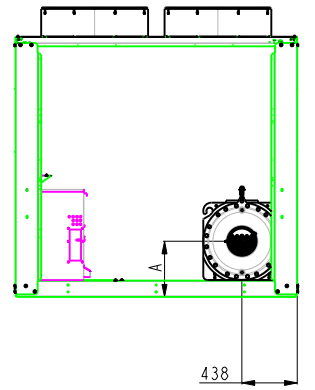
**OPTION 107**



OPT 107	30XA 1002	30XA 952 OPT 254 OR 255
A	297	325
B	290	284
C	2589	2570
D	2907	2918
Ø E	219.1	168.3



**OPTION 100C**

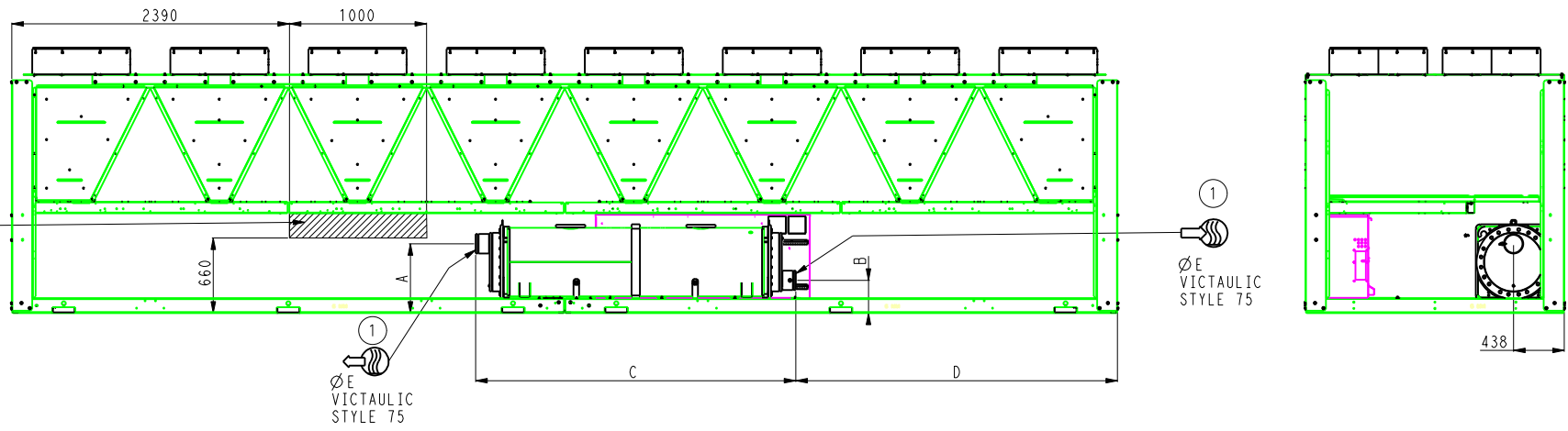


OPT 100C	30XA 1002	30XA 902 OPT 254 OR 255
A	436	467
C	2665	2649
D	2834	2842
Ø E	219.1	168.3

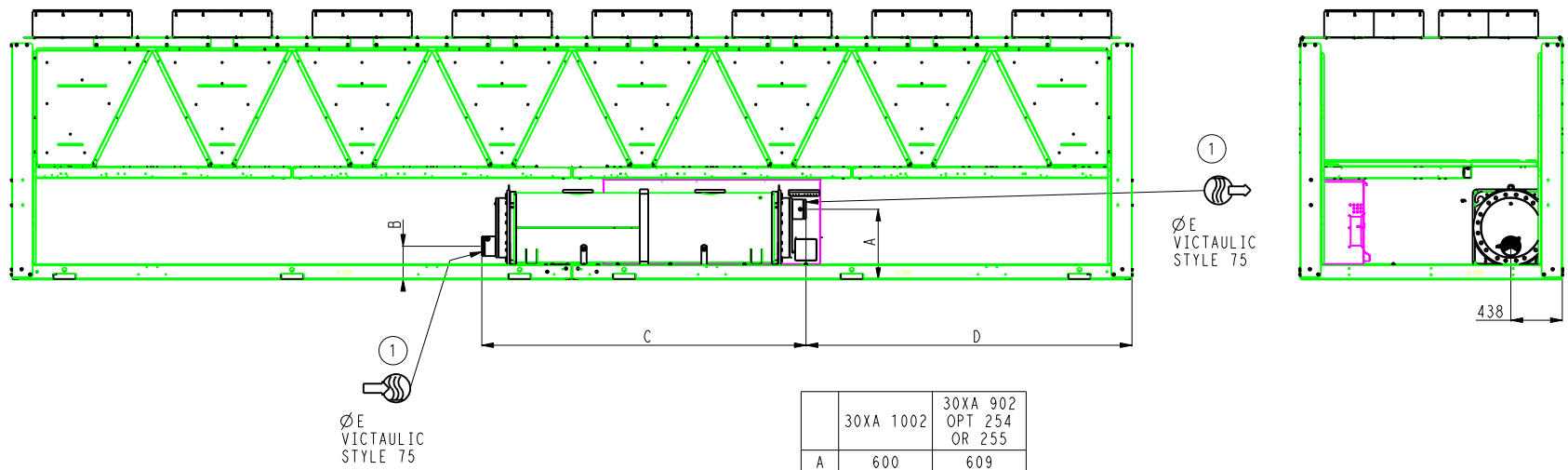
1  
Ø E  
VICTAULIC  
STYLE 75

**!** THE OUTLET CONNECTING PIPE CAN'T BE STRAIGHT, DUE TO OTHER PARTS' PROXIMITY IN THIS AREA

**OPTION 100A**    OR    **OPTION 5**    OR    **OPTION 6**

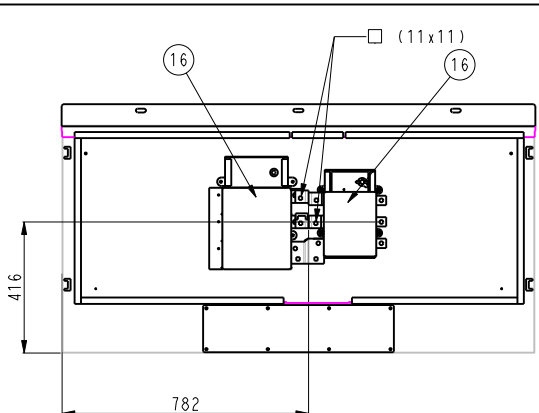
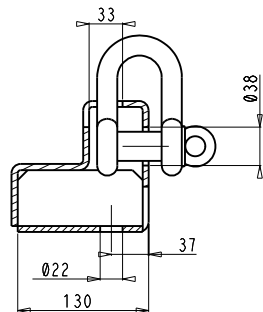
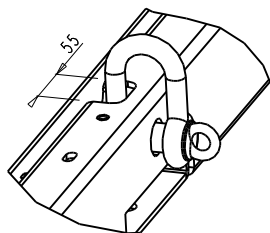
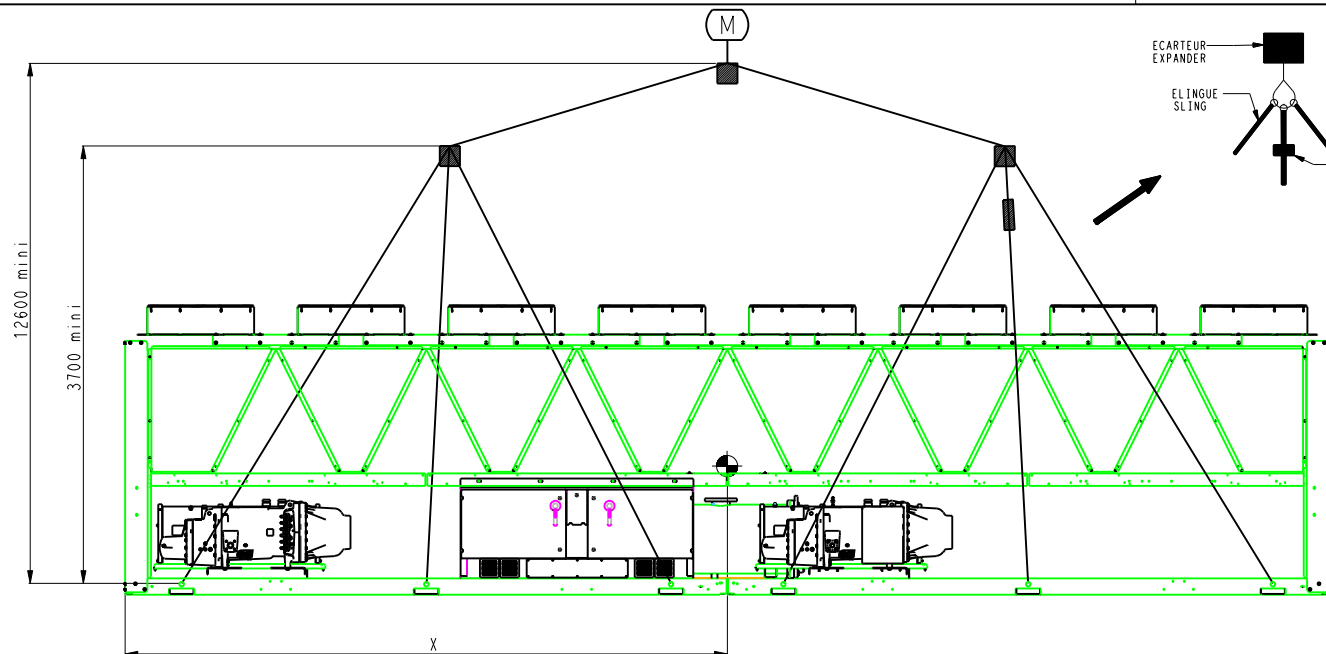
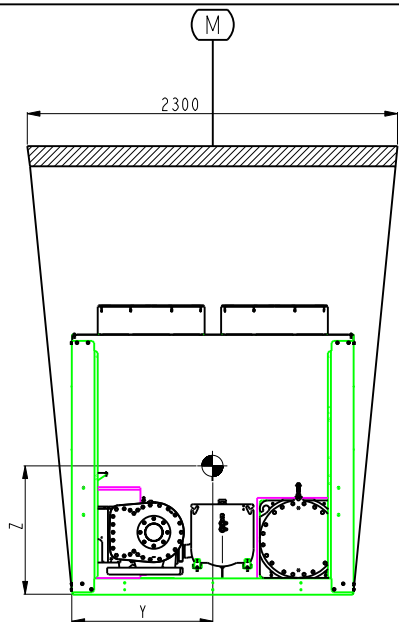


**OPTION 100A + 107**    OR    **OPTION 5 + 107**    OR    **OPTION 6 + 107**



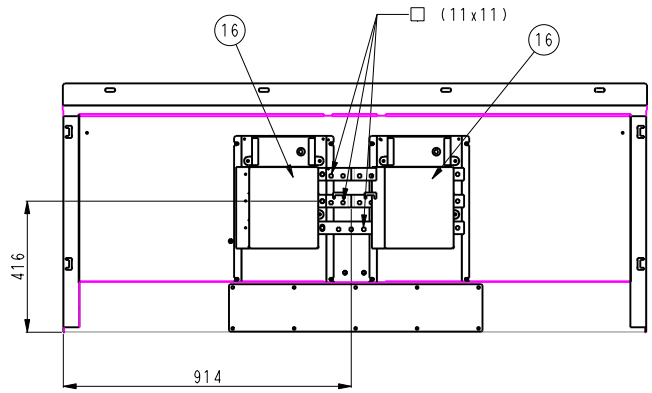
	30XA 1002	30XA 902 OPT 254 OR 255
A	600	609
B	284	325
C	2767	2767
D	2783	2783
E	168.3	141.3

TOLERANCE ±10	30XA 1002		DATE	Feuille Sheet 4/77 Indice H
	30XA 902 OPT 254 OR 255		02-04-2012	
		00DCG000009400		



ELECTRICAL BOX: POWER CONNECTION

**A400**  
30XA 902 OPT 254 OR 255




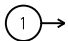
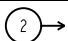
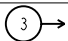
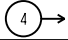
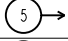
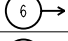
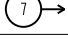
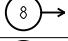
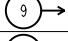
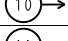
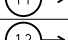
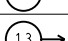
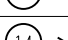
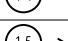
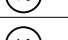
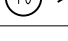
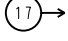
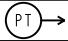

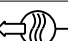



ELECTRICAL BOX: POWER CONNECTION

**A300**  
30XA 1002

TOLERANCE ±10	30XA 1002		DATE	Feuille Sheet 5/7 Indice H
	30XA 902 OPT 254 OR 255		02-04-2012	
		00DCG000009400		

TAILLE SIZE	OPTIONS	PT (Kg)	P1 (Kg)	P2 (Kg)	P3 (Kg)	P4 (Kg)	P5 (Kg)	P6 (Kg)	P7 (Kg)	P8 (Kg)	P9 (Kg)	P10 (Kg)	P11 (Kg)	P12 (Kg)	X (mm)	Y (mm)	Z (mm)
30XA 902	OPT 254 OR 255 + OPT 279	9010	904	799	856	756	808	714	786	694	739	652	691	610	3616	981	808
30XA 1002	OPT 279	8226	832	736	786	695	738	653	716	634	670	593	623	551	3528	983	764
30XA 1002	OPT 23 + OPT 279	8376	848	749	800	708	751	665	729	645	682	603	634	561	3528	983	764
30XA 1002	STD UNIT	7836	793	701	748	662	703	622	682	603	638	564	593	525	3528	983	764
30XA 1002	OPT 254 OR 255 + OPT 279	9260	937	828	884	782	831	735	806	713	754	667	701	620	3528	983	764
30XA 902	OPT 254 OR 255	8620	868	769	820	726	772	684	751	664	704	623	656	581	3616	981	808
30XA 1002	OPT 23	7986	809	714	762	675	716	634	695	614	650	574	604	535	3528	983	764
30XA 1002	OPT 254 OR 255	8870	898	793	846	749	796	704	772	682	722	638	671	594	3528	983	764

TOLERANCE  ±10	30XA 1002		DATE	Feuille Sheet 8/11 Indice H
	30XA 902 OPT 254 OR 255		02-04-2012	
			<b>00DCG000009400</b>	

	ENGLISH	FRANCAIS	GERMAIN	ESPAÑOL	ITALIANO
	Cooler water inlet and outlet	Entrée et sortie eau évaporateur	Kaltwasser eintritt und austritt	Entrada y salida agua al evaporador	Entrata e uscita acqua evaporatore
	Cooler air vent	Purge air évaporateur	Kaltwasser entlüftungsventil	Purgador aire evaporador	Valvola sfogo aria evaporatore
	Water drain	Purge eau évaporateur	Kaltwasser abfluss	Drenaje agua evaporador	Scarico acqua evaporatore
	NA	NA	NA	NA	NA
	Safety relief valve LP	Soupape de sécurité BP	Verdampfer sichereitsventil LP	Valvula de seguridad LP	Valvola di sicurezza LP
	NA	NA	NA	NA	NA
	NA	NA	NA	NA	NA
	NA	NA	NA	NA	NA
	Safety relief valve HP	Soupape de sécurité HP	Verdampfer sichereitsventil HP	Valvula de seguridad HP	Valvola di sicurezza HP
	NA	NA	NA	NA	NA
	NA	NA	NA	NA	NA
	NA	NA	NA	NA	NA
	Services clearances required	Espace nécessaire à la maintenance	Freiraum für wartung	Espacio necesario para servicio y mantenimiento	Spazio necessario per il servizio
	Space required to remove cooler tubes	Espace nécessaire au réentubage de l'évaporateur	Freiraum für rohren austausch	Espacio necesario para cambiar tubos de los intercambiadores	Spazio necessario per la rimozione dei tube evap.
	Electrical box	Coffret électrique	Schaltschrank	Caja electrica	Pannello elettrico
	Main disconnect switch	Interrupteur général	Haupttrennschalter	Interruptor de desconexión principal	Sezionatore general
	NA	NA	NA	NA	NA
	Total operating weight	Poids total en fonctionnement	Betriebsgewicht	Peso en funcionamiento	Peso in funzionamento
	Inlet water	Entrée eau	Wasser eintritt	Entrada agua	Entrata acqua
	Outlet water	Sortie eau	Wasser austritt	Salida agua	Uscita acqua
	Electrical supply entry	Entrée raccordement électrique	Strom Anschlüsse	Entrada cables electricos	Entrata cavi alimentazione
	Center of gravity	Centre de gravité	Maschinenschwerpunkt	Centro de gravedad	Centro di gravita
	Handling Rigging of the unit: the sizing of the rigging or lifting elements is the responsibility of the installer	Manutention de l'unité Le dimensionnement des éléments de manutention ou de levage sont sous la responsabilité du manutentionnaire	Anheben des geräts Der installateur ist für die dimensionierung der hebeelemente verantwortlich	Sostienimento de la unidad Las dimensiones de los elementos de sostienimento o levantamiento es responsabilidad de instalador	Sollevamento dell'apparechio La responsabilita del dimensionamento degli elementi di sistema di sollevamento e di pertinenza dell'installator

TOLERANCE

±10

30XA 1002

30XA 902 OPT 254 OR 255



DATE

02-04-2012

Feuille

Sheet

7/77

Indice

H

00DCG000009400